

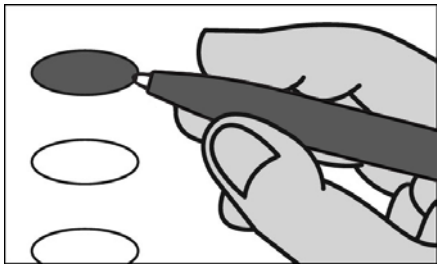
Official Primary Ballot

Partisan Office
August 9, 2022

S67

Notice to Voters: If you are voting on Election Day, your ballot must be initialed by two (2) election inspectors. If you are voting absentee, your ballot must be initialed by the municipal clerk or deputy clerk. Your ballot may not be counted without initials (see end of ballot for initials).

General Instructions



If you make a mistake on your ballot or have a question, ask an election inspector for help (absentee voters: Contact your municipal clerk).

To vote for a name on the ballot, fill in the oval next to the name like this: ●

To vote for a name that is not on the ballot, write the name on the line marked "write-in" and fill in the oval next to the name like this: ●

Special Instructions for Voting in a Partisan Primary

In the Partisan Primary:

- You may vote in only ONE party's primary.
- If you choose a party, votes cast in that party will be counted. Votes cast in any other party will not be counted.
- If you do not choose a party, and you vote in more than one party, no votes will be counted.

You must vote for individual candidates.

Party Preference Section

Choose a party in which to vote

Fill in the oval next to your party choice like this: ●

Choose only ONE

- Democratic
- Republican
- Libertarian
- Constitution

Democratic Party Primary

If you vote in this party's primary, you may not vote in any other party's primary.

Statewide

**Governor
Vote for 1**

- Tony Evers
- write-in

**Lieutenant Governor
Vote for 1**

- Peng Her
- Sara Rodriguez
- write-in

**Attorney General
Vote for 1**

- Josh Kaul
- write-in

**Secretary of State
Vote for 1**

- Doug La Follette
- Alexia Sabor
- write-in

**State Treasurer
Vote for 1**

- Aaron Richardson
- Angelito Tenorio
- Gillian M. Battino
- write-in

Congressional

**United States Senator
Vote for 1**

- Mandela Barnes
- Alex Lasry
- Kou C. Lee
- Sarah Godlewski
- Peter Peckarsky
- Steven Olikara
- Darrell Williams
- Tom Nelson
- write-in

**Representative in Congress
District 2
Vote for 1**

- Mark Pocan
- write-in

Legislative

**State Senator
District 15
Vote for 1**

- Mark Spreitzer
- write-in

**Representative to the Assembly
District 43
Vote for 1**

- Jenna Jacobson
- Matt McIntyre
- write-in

County

**Sheriff
Vote for 1**

- Calvin Barrett
- write-in

**Clerk of Circuit Court
Vote for 1**

- Carlo Esqueda
- write-in

STOP End Democratic Party Primary

Republican Party Primary

If you vote in this party's primary, you may not vote in any other party's primary.

Statewide

**Governor
Vote for 1**

- Kevin Nicholson
- Rebecca Kleefisch
- Timothy Ramthun
- Adam J. Fischer
- Tim Michels
- write-in

**Lieutenant Governor
Vote for 1**

- Patrick Testin
- Will Martin
- Kyle Yudes
- Roger Roth
- David C. Varnam
- Cindy Werner
- David D. King
- Jonathan Wichmann
- write-in

**Attorney General
Vote for 1**

- Eric Toney
- Karen Mueller
- Adam Jarchow
- write-in

**Secretary of State
Vote for 1**

- Amy Lynn Loudonbeck
- Jay Schroeder
- Justin D. Schmidtka
- write-in

**State Treasurer
Vote for 1**

- John S. Leiber
- Orlando Owens
- write-in

Congressional

**United States Senator
Vote for 1**

- Ron Johnson
- David Schroeder
- write-in

**Representative in Congress
District 2
Vote for 1**

- Charity Barry
- Erik Olsen
- write-in

Legislative

**State Senator
District 15
Vote for 1**

- Mark Trofimchuck
- write-in

**Representative to the Assembly
District 43
Vote for 1**

- Marisa Voelkel
- write-in

County

**Sheriff
Vote for 1**

- Anthony D. Hamilton
- write-in

**Clerk of Circuit Court
Vote for 1**

- write-in

STOP End Republican Party Primary

Libertarian Party Primary

If you vote in this party's primary, you may not vote in any other party's primary.

Statewide

**Governor
Vote for 1**

write-in

**Lieutenant Governor
Vote for 1**

write-in

**Attorney General
Vote for 1**

write-in

**Secretary of State
Vote for 1**

Neil Harmon

write-in

**State Treasurer
Vote for 1**

write-in

Congressional

**United States Senator
Vote for 1**

write-in

**Representative in Congress
District 2
Vote for 1**

write-in

Legislative

**State Senator
District 15
Vote for 1**

write-in

**Representative to the Assembly
District 43
Vote for 1**

write-in

County

**Sheriff
Vote for 1**

write-in

**Clerk of Circuit Court
Vote for 1**

write-in

write-in

write-in

write-in

write-in

write-in

write-in

write-in

write-in

write-in

write-in

write-in

write-in

write-in

write-in

write-in

write-in

write-in

write-in

write-in

write-in

write-in

write-in

write-in

write-in

write-in

write-in

write-in

write-in

write-in

write-in

write-in

write-in

write-in

write-in

write-in

Constitution Party Primary

If you vote in this party's primary, you may not vote in any other party's primary.

Statewide

**Governor
Vote for 1**

write-in

**Lieutenant Governor
Vote for 1**

write-in

**Attorney General
Vote for 1**

write-in

**Secretary of State
Vote for 1**

write-in

**State Treasurer
Vote for 1**

Andrew Zuelke

write-in

Congressional

**United States Senator
Vote for 1**

write-in

**Representative in Congress
District 2
Vote for 1**

write-in

Legislative

**State Senator
District 15
Vote for 1**

write-in

**Representative to the Assembly
District 43
Vote for 1**

write-in

County

**Sheriff
Vote for 1**

write-in

**Clerk of Circuit Court
Vote for 1**

write-in

write-in

write-in

write-in

write-in

write-in

write-in

write-in

write-in

write-in

write-in

write-in

write-in

write-in

write-in

write-in

write-in

write-in

write-in

write-in

write-in

write-in

write-in

write-in

write-in

write-in

write-in

write-in

write-in

write-in

write-in

write-in

write-in

write-in

write-in

write-in

write-in

Official Primary Ballot
Partisan Office

August 9, 2022
for
City of Edgerton
Dane - Ward 7

Ballot issued by

Initials of election inspectors

Absentee ballot issued by

Initials of Municipal Clerk or Deputy Clerk
If issued by SVDs, both must initial

Certification of Voter Assistance
I certify that I marked or read aloud this ballot at the request and direction of a voter who is authorized under Wis. Stat. §6.82 to receive assistance.

Signature of assistor

For Official Use Only

Inspectors: Identify ballots required to be remade:
 Overvoted
 Damaged
 Other

If this is the **Original Ballot**, write the serial number here: _____
If this is the **Duplicate Ballot**, write the serial number here: _____

Initials of inspectors who remade ballot