

Official Ballot

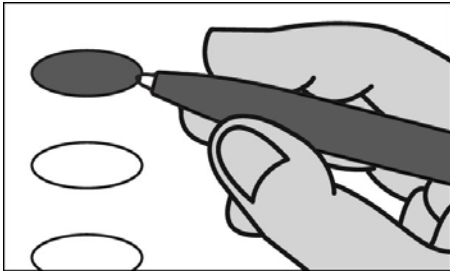
Nonpartisan Office

April 5, 2022

S104

Notice to Voters: If you are voting on Election Day, your ballot must be initialed by two (2) election inspectors. If you are voting absentee, your ballot must be initialed by the municipal clerk or deputy clerk. Your ballot may not be counted without initials (see end of ballot for initials).

General Instructions



If you make a mistake on your ballot or have a question, ask an election inspector for help (absentee voters: Contact your municipal clerk).

To vote for a name on the ballot, fill in the oval next to the name like this: ●

To vote for a name that is not on the ballot, write the name on the line marked "write-in" and fill in the oval next to the name like this: ●

Judicial

Court of Appeals Judge District 4 Vote for 1

- Brian Blanchard
- write-in

Circuit Court Judge Branch 3 Vote for 1

- Diane Schlipper
- write-in

Circuit Court Judge Branch 4 Vote for 1

- Everett D. Mitchell
- write-in

Circuit Court Judge Branch 5 Vote for 1

- Nicholas J. McNamara
- write-in

Continue voting at top of next column.

Judicial (cont.)

Circuit Court Judge Branch 14 Vote for 1

- John D. Hyland
- write-in

Circuit Court Judge Branch 15 Vote for 1

- Stephen Ehlke
- write-in

County

County Supervisor District 37 Vote for 1

- Kate McGinnity
- Steven Schulz
- write-in

Multi-Jurisdictional Judge

City of Edgerton and Town of Fulton Municipal Judge Vote for 1

- Dale Pope
- write-in

Municipal

Mayor Vote for 1

- Christopher W. Lund
- write-in

Alderperson District 3 Vote for 1

- Jim Burdick
- write-in

Continue voting at top of next column.

School District

Edgerton School District School Board Member Vote for not more than 3

- Jim Raymond
- Matt Towns
- Kathy Klein
- write-in
- write-in
- write-in

Official Ballot
Nonpartisan Office
April 5, 2022
for
City of Edgerton
Dane - Ward 7

Ballot issued by

Initials of election inspectors

Absentee ballot issued by

Initials of Municipal Clerk or Deputy Clerk
If issued by SVDs, both must initial.

Certification of Voter Assistance
I certify that I marked or read aloud this ballot at the request and direction of a voter who is authorized under Wis. Stat. §6.82 to receive assistance.

Signature of assistor

For Official Use Only

Inspectors: Identify ballots required to be remade:

- Overvoted
- Damaged
- Other

If this is the Original Ballot , write the serial number here: _____	If this is the Duplicate Ballot , write the serial number here: _____
--	---

Initials of inspectors who remade ballot