

Official Ballot

Presidential Preference Vote

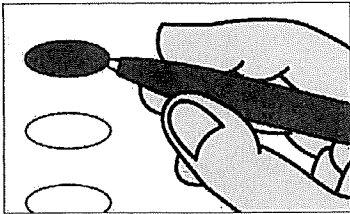
Nonpartisan Office and Referendum

April 2, 2024

S121

Notice to Voters: If you are voting on Election Day, your ballot must be initialed by two (2) election inspectors. If you are voting absentee, your ballot must be initialed by the municipal clerk or deputy clerk. Your ballot may not be counted without initials-(see end of ballot for initials).

General Instructions



If you make a mistake on your ballot or have a question, ask an election inspector for help (absentee voters: Contact your municipal clerk).

To vote for a name on the ballot, fill in the oval next to the name like this:

To vote for a name that is not on the ballot, write the name on the line marked "write-in" and fill in the oval next to the name like this:

Presidential Preference Vote

In the Presidential Preference Vote:

- You may vote for only ONE candidate.
- You may vote in only ONE party.
- If you choose a party, votes cast in that party will be counted. Votes cast in any other party will not be counted.
- If you do not choose a party, and you vote in more than one party, no votes will be counted.

Special Instructions for Presidential Preference Vote

Choose the party in which you will vote. Within the party you have chosen, you will have ONE of three choices:

1. Vote for a candidate whose name is printed on this ballot in the party you have chosen.
2. Vote for an uninstructed delegation from Wisconsin to the national convention of the party you have chosen.
3. Write in the name of another person to become the presidential candidate of the party you have chosen.

Fill in ONE oval in ONE party.

Rock Co.

Presidential Preference Vote begins at top of next column.

Presidential Preference Vote

Choose a party in which to vote

Fill in the oval next to your party of choice, like this: Choose only ONE

Democratic

Republican

Democratic Party Primary

If you vote in this party's primary, you may not vote in any other party's primary.

President of the United States Vote for 1

Joe Biden

Dean Phillips

Uninstructed Delegation

write-in

STOP End Democratic Party Primary

Republican Party Primary

If you vote in this party's primary, you may not vote in any other party's primary.

President of the United States Vote for 1

Chris Christie

Vivek Ramaswamy

Ron DeSantis

Nikki Haley

Donald Trump

Uninstructed Delegation

write-in

STOP End Republican Party Primary

STOP End Presidential Preference Vote

Nonpartisan offices begin here.

Judicial

Court of Appeals Judge District 4

Vote for 1

JoAnne Kloppenburg

write-in

Circuit Court Judge Branch 3

Vote for 1

Jeffrey S. Kuglitsch

write-in

Circuit Court Judge Branch 7

Vote for 1

Barbara W. McCrory

write-in

Continue voting at top of next column.

County

County Supervisor District 3

Vote for 1

Debi Towns

Danette Rynes

write-in

Multi-Jurisdictional Judge

City of Edgerton and Towns of Fulton and Albion Municipal Judge

Vote for 1

Jeffrey T. Roethe

write-in

Municipal

City of Edgerton Alderperson

District 1

Vote for 1

Matt McIntyre

Michelle Crisanti

write-in

Municipal

City of Edgerton Alderperson

District 2

Vote for 1

Tim Shaw

write-in

Municipal

City of Edgerton Alderperson

District 3

Vote for 1

Jim Burdick

write-in

School District

School District of Edgerton School Board Member

Vote for not more than 3

Steven Doll

Kelly Kwiatkowski

Jenna Gresens

write-in

write-in

write-in

Continue voting on back of ballot.

SAMPLE

Referendum

To vote in favor of the question, fill in the oval next to "Yes," like this: ●

To vote against the question, fill in the oval next to "No," like this: ○

State

QUESTION 1: "Use of private funds in election administration. Shall section 7 (1) of article III of the constitution be created to provide that private donations and grants may not be applied for, accepted, expended, or used in connection with the conduct of any primary, election, or referendum?"

Yes

No

State

QUESTION 2: "Election officials. Shall section 7 (2) of article III of the constitution be created to provide that only election officials designated by law may perform tasks in the conduct of primaries, elections, and referendums?"

Yes

No

School District of Edgerton

QUESTION: Shall the School District of Edgerton, Rock, Dane and Jefferson Counties, Wisconsin be authorized to exceed the revenue limit specified in Section 121.91, Wisconsin Statutes, by \$3,500,000 beginning with the 2024-2025 school year, for recurring purposes consisting of operational and maintenance expenses?

Yes

No

Official Ballot

Presidential Preference Vote
Nonpartisan Office and Referendum

April 2, 2024

for

City of Edgerton

Wards 1 - 2

Aldermanic District 1

Wards 3 - 4

Aldermanic District 2

Wards 5 - 6

Aldermanic District 3

Rock CO.

Ballot Issued by

Initials of election inspectors

Absentee ballot issued by

Initials of Municipal Clerk or Deputy Clerk

If issued by SVDs, both must initial.

Certification of Voter Assistance

I certify that I marked or read aloud this ballot at the request and direction of a voter who is authorized under Wis. Stat. §6.82 to receive assistance.

Signature of assistor

For Official Use Only

Inspectors: Identify ballots required to be remade:

- Overvoted
- Damaged
- Other

If this is the Original Ballot, write the serial number here:

If this is the Duplicate Ballot, write the serial number here:

Initials of inspectors who remade ballot



Official Ballot

Presidential Preference Vote

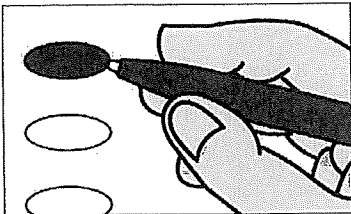
Nonpartisan Office and Referendum

April 2, 2024

S124

Notice to Voters: If you are voting on Election Day, your ballot must be initialed by two (2) election inspectors. If you are voting absentee, your ballot must be initialed by the municipal clerk or deputy clerk. Your ballot may not be counted without initials (see end of ballot for initials).

General Instructions



If you make a mistake on your ballot or have a question, ask an election inspector for help (absentee voters: Contact your municipal clerk).

To vote for a name on the ballot, fill in the oval next to the name like this:

To vote for a name that is not on the ballot, write the name on the line marked "write-in" and fill in the oval next to the name like this:

Presidential Preference Vote

In the Presidential Preference Vote:

- You may vote for only ONE candidate.
- You may vote in only ONE party.
- If you choose a party, votes cast in that party will be counted. Votes cast in any other party will not be counted.
- If you do not choose a party, and you vote in more than one party, no votes will be counted.

Special Instructions for Presidential Preference Vote

Choose the party in which you will vote. Within the party you have chosen, you will have ONE of three choices:

1. Vote for a candidate whose name is printed on this ballot in the party you have chosen.
2. Vote for an uninstructed delegation from Wisconsin to the national convention of the party you have chosen.
3. Write in the name of another person to become the presidential candidate of the party you have chosen.

Fill in ONE oval in ONE party.

Dane Co.

Presidential Preference Vote begins at top of next column.

Presidential Preference Vote

Choose a party in which to vote

Fill in the oval next to your party of choice, like this: Choose only ONE

- Democratic
- Republican

Democratic Party Primary

If you vote in this party's primary, you may not vote in any other party's primary.

President of the United States Vote for 1

- Joe Biden
- Dean Phillips
- Uninstructed Delegation
- write-in

STOP End Democratic Party Primary

Republican Party Primary

If you vote in this party's primary, you may not vote in any other party's primary.

President of the United States Vote for 1

- Chris Christie
- Vivek Ramaswamy
- Ron DeSantis
- Nikki Haley
- Donald Trump
- Uninstructed Delegation
- write-in

STOP End Republican Party Primary

STOP End Presidential Preference Vote

Nonpartisan offices begin here.

Judicial

Court of Appeals Judge District 4 Vote for 1

- JoAnne Kloppenburg
- write-in

Circuit Court Judge Branch 1 Vote for 1

- Susan M. Crawford
- write-in

Circuit Court Judge Branch 8 Vote for 1

- Frank D. Remington
- write-in

Continue voting at top of next column.

Judicial (cont.)

Circuit Court Judge Branch 10 Vote for 1

- Ryan D. Nilsestuen
- write-in

Circuit Court Judge Branch 11 Vote for 1

- Ellen K. Berz
- write-in

Circuit Court Judge Branch 12 Vote for 1

- Ann Peacock
- write-in

County

County Supervisor District 37 Vote for 1

- Kerry Marren
- write-in

Multi-Jurisdictional Judge

City of Edgerton and Towns of Fulton and Albion Municipal Judge Vote for 1

- Jeffrey T. Roethe
- write-in

Municipal

City of Edgerton Aldersperson District 3 Vote for 1

- Jim Burdick
- write-in

School District

School District of Edgerton School Board Member Vote for not more than 3

- Steven Doll
- Kelly Kwiatkowski
- Jenna Gresens
- write-in
- write-in
- write-in

Continue voting on back of ballot.

SAMPLE

Referendum

To vote in favor of the question, fill in the oval next to "Yes," like this:

To vote against the question, fill in the oval next to "No," like this:

State

QUESTION 1: "Use of private funds in election administration. Shall section 7 (1) of article III of the constitution be created to provide that private donations and grants may not be applied for, accepted, expended, or used in connection with the conduct of any primary, election, or referendum?"

Yes

No

State

QUESTION 2: "Election officials. Shall section 7 (2) of article III of the constitution be created to provide that only election officials designated by law may perform tasks in the conduct of primaries, elections, and referendums?"

Yes

No

School District of Edgerton

QUESTION: Shall the School District of Edgerton, Rock, Dane and Jefferson Counties, Wisconsin be authorized to exceed the revenue limit specified in Section 121.91, Wisconsin Statutes, by \$3,500,000 beginning with the 2024-2025 school year, for recurring purposes consisting of operational and maintenance expenses?

Yes

No

Official Ballot

Presidential Preference Vote
Nonpartisan Office and Referendum

April 2, 2024

for

City of Edgerton

Ward 7

Dane County

Ballot issued by

Initials of election inspectors

Absentee ballot issued by

If issued by SVDs, both must initial.

Certification of Voter Assistance

I certify that I marked or read aloud this ballot at the request and direction of a voter who is authorized under Wis. Stat. §6.82 to receive assistance.

Signature of assistor

For Official Use Only

Inspectors: Identify ballots required to be remade:

Overvoted

Damaged

Other

If this is the Original Ballot, write the serial number here:

If this is the Duplicate Ballot, write the serial number here:

Initials of inspectors who remade ballot

