

**CITY OF EDGERTON
CITY HALL
12 ALBION STREET
EDGERTON, WI**

TREE BOARD

Wednesday, August 30, 2023 at 5:30 p.m.

NOTICE: The meeting noticed above will also be live streamed on a Zoom platform: To view the meeting, please select the link to the meeting listed on the **calendar events** on the City website's home page at www.cityofedgerton.com. Due to occasional technical difficulties, citizen participation via Zoom may not be possible.

1. Call to order; Roll Call.
2. Confirmation of Appropriate Meeting Notice Posted on Friday, August 25, 2023.
3. Elect Chair.
4. Approve April 3, 2023 meeting minutes.
5. Presentation of tree inventory.
6. Update on gravel bed trees.
7. Staff report.
8. Adjourn.

cc: All Commission Members
Department Heads

City Administrator
City Engineer

All Council Members
Newspapers

NOTICE: If a person with a disability requires that the meeting be accessible or that materials at the meeting be in an accessible format, call the City Administrator's office at least 6 hours prior to the meeting to request adequate accommodations. Telephone: 884-3341

"Notice is hereby given that a majority of the Common Council is expected to be present at the above scheduled noticed meeting to gather information about a subject over which they have decision-making responsibility. The only action to be taken at this meeting will be action by the Public Works Committee."

**APRIL 3, 2023 TREE BOARD MEETING MINUTES
CITY OF EDGERTON**

Sarah Beckwith called the meeting to order at 6:00 p.m.

Present: Sarah Beckwith, Rebecca Diedrick, Judy Furan, Kathy Klein, Barb Bublitz and Tim Shaw

Absent: Barb Steponkus

Others Present: City Administrator Ramona Flanigan and Municipal Services Director Howard Moser

Flanigan confirmed the meeting agendas were properly posted on Friday, March 31, 2023 at the Post Office, Edgerton Library, City Hall and the City's website.

APPROVAL OF MINUTES: A Shaw/Diedrick motion to approve the December 12, 2022 Tree Board meeting minutes passed on a 6/0 roll call vote.

ARBOR DAY CELEBRATION AND TREE PLANTING: Moser proposed the April 28 Arbor Day celebration and tree planting take place at the Edgerton Middle School. The Board discussed and agreed on the proposed location.

PLANTING OF CITY PROVIDED TREES ON PRIVATE PROPERTY: Staff is proposing the implementation of a private property tree planting program. The new program would enhance the current street tree planting program by making it possible for residents to participate who do not have a viable terrace for planting. If the City were to plant a tree on private property because the terrace was unsuitable for planting, the property owners would be required to sign an agreement outlining the requirements and owner responsibility.

The Board discussed two policy questions: will there be a fee for trees on private property and if so, how much; and will trees be planted on private property if the terrace is suitable for planting. A fee of \$25 was agreed upon and trees will not be allowed to be planted on private property if the terrace is suitable for planting. The option of selecting a type of tree for \$25 will also apply to the private property tree planting program.

A Diedrick/Shaw motion to approve the policy, including the answers to the policy questions, for City provided trees on private property passed on a 6/0 roll call vote.

WDNR TREE INVENTORY GRANT: A forestry intern was hired for the tree inventory and will start June 1.

GRAVEL BED TREES: Gravel bed trees have been ordered and are scheduled to be delivered April 19.

Being no other business before the Board, a Beckwith/Klein motion to adjourn passed on a 6/0 roll call vote.

Ramona Flanigan/mjd
City Administrator

Memo

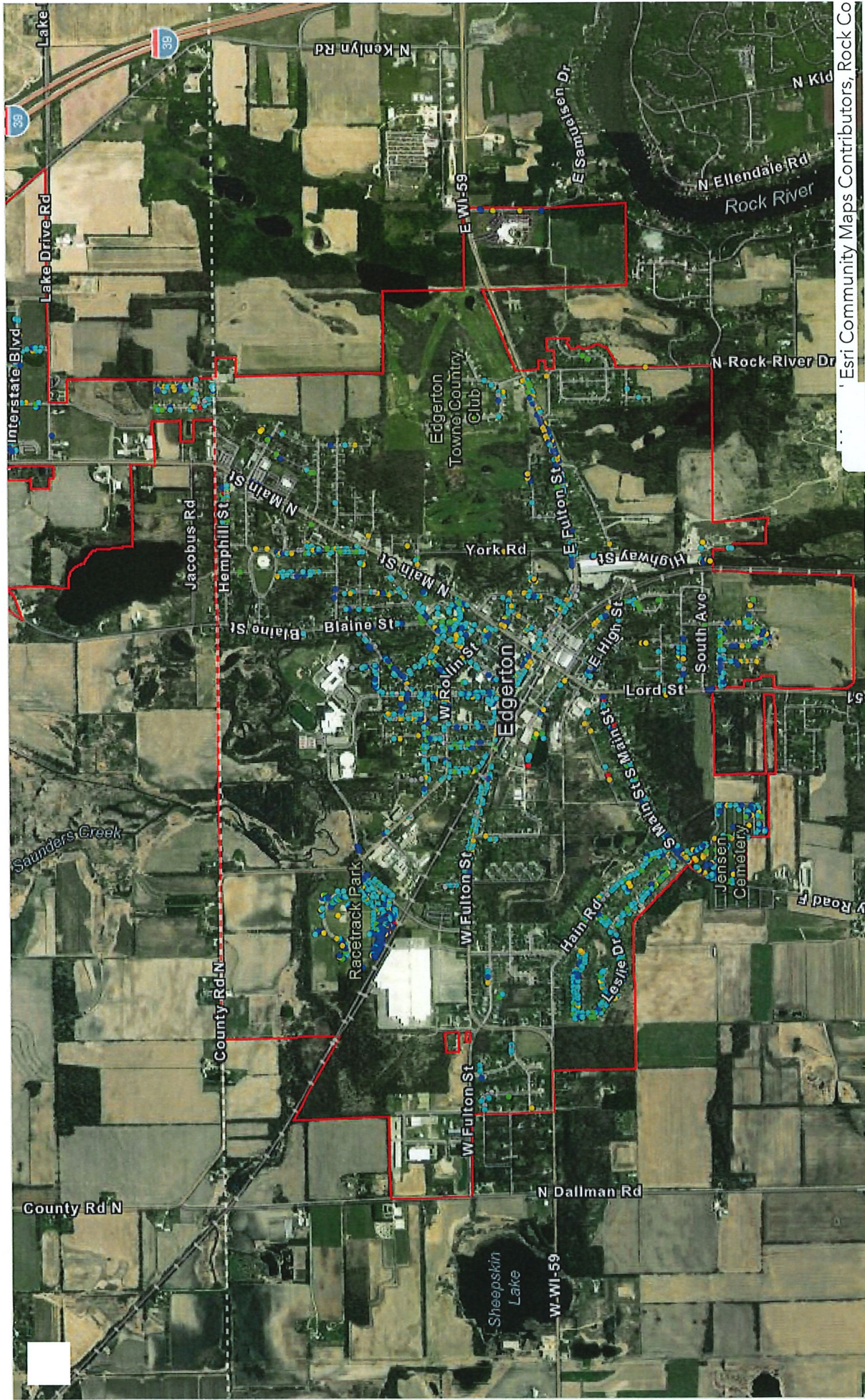
To: Tree Board

From: Staff

Date: 8/22/2023

Re: August 30, 2023 Meeting

Tree Inventory: The tree inventory is complete and our summer intern, Cassidy Behnke, will attend the meeting to present the details of the data. The attached map is a summary map of the inventory that is now in our GIS system.



Inventory Overview

Recent Collections

Esri Community Maps Contributors, Rock Co